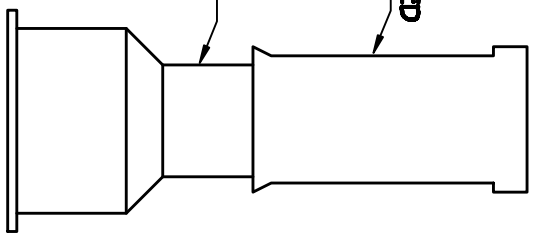


BOX SHALL BE CENTERED OVER VALVE

ALL PARTS SHALL BE OF THE SAME MATERIAL AND SUPPLIED BY THE SAME MANUFACTURER



COMPLETE BOX

- NOTES:
- 1) VALVE BOX COVER SHALL WEIGH A MINIMUM 13 lbs.
 - 2) ENTIRE VALVE BOX ASSEMBLY & COVER SHALL BE CAST FROM CLASS 35 GRAY IRON.
 - 3) ASSEMBLY SHALL BE DOMESTICALLY MADE AND MANUFACTURED IN THE U.S.A.
 - 4) ASSEMBLY OTHER THAN COVER SHALL BE PAINTED BLACK.

•• New detail for valve boxes

CITY OF RALEIGH			
DEPARTMENT OF PUBLIC UTILITIES			
STANDARD VALVE BOX (FOR RECLAIMED WATER)			
DWG. NO.	REVISIONS:	DATE:	REVISIONS:
R-15	DHL	10/1/07	
	J.P.S.	10/22/11	
			DATE: